

GlobalSign SSL Managed Service™ Manage Multiple Educational Level SSL Certificates

Manage the complete lifecycle of educational level SSL Certificates through GlobalSign's SSL Managed Service, including issuing, reissuing, renewing, revoking and billing management for multiple SSL Certificates across numerous departments and institute locations.

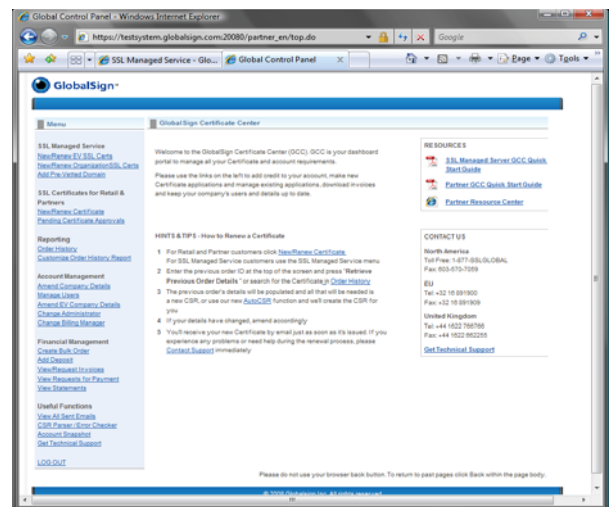
SSL Managed Service provides the ability to manage both GlobalSign's standard and most advanced SSL Certificates through a web based management interface designed around education specific security requirements and will help educational bodies significantly reduce the budget, time and management costs of using SSL.

The Importance of Security within Education Environments

With intensified pressures for educational enterprises to provide more services online, security plays an increasing critical role for schools, colleges and universities of all sizes. Educational institutions need to sustain reliable, highly trusted networks not only to ensure all functions are secure, but to meet stipulated regulatory conditions surrounding student confidentiality and privacy.

With the need for departments, lecturers and students alike to easily access, share and transfer information via the Internet, Intranet or web mail for example, it is important that all platforms remain fully secure. Today there is an ever increasing focus on the importance of strengthening educational security infrastructures with the growing need for the use of the strongest encryption and authentication.

SSL, the transaction layer security technology, is now an integral part of every educational institutions security policies – service logins, transactions, data transfer, network traffic, and digital communications require a secure platform from which to be delivered and processed. As digital-age threats such as phishing attacks and identity theft continue to increase, staff and students now expect an ever higher level of security as standard, while the Institutes themselves are under more pressure to protect their brand against newly emerging security threats such as copycat websites and diploma/certificate mills. Undeniably SSL Certificates are now an essential operational requirement for all educational institutes that have an online presence.



Minimise PKI Costs with GlobalSign's PKI Service

With ever increasing digital threats, Public Key Infrastructure (PKI) solutions are used to maintain trustworthy networking environments by securing the exchange of information over unsure networks and platforms. Today, organisations have the choice whether to operate an inhouse solution or to outsource their PKI requirements, both having numerous advantages and disadvantages.

This growing requirement for increased security through PKI services can impact on the enterprises restricted budget, time and management resources. For example, implementing an inhouse PKI solution requires new investment in software, hardware and will require sufficient IT and administrative capacity to implement the solution successfully. For these reasons, most educational bodies opt for an outsourced, fully managed Certificate Services provider where costs can be significantly reduced, but control is kept firmly with the organisation.

For enterprises wishing to operate an inhouse solution, GlobalSign can provide immediate trust for SSL, S/MIME and code signing certificates via its Trusted Root program. By chaining the enterprises inhouse CA Root Certificate to GlobalSign's pre-trusted embedded Root Certificate, enterprises no longer have to undertake a root embedding program to have their self-signed Root CA Certificate inserted into all operating systems, browsers and applications which is timely as well as costly.

Through global investment in technology, staff and understanding of compliancy and regulation, GlobalSign has built an incredibly robust and comprehensive PKI service designed for effective management of SSL Certificates. GlobalSign's SSL Managed Service enables control of SSL Certificate issuance and management, without the need to invest in expensive infrastructure and expert staff. It is highly cost-effective, scalable, reliable, immediately deployable, and being a fully managed web based service, incredibly fast and simple to use.

Benefits of Using SSL

- Fully secure network infrastructure including Internet, Intranet, web mail etc
- Protect from security threats such as phishing attacks and identity theft
- Protect the institutes brand name, reputation and competitive edge against security threats such as falsified websites, transcripts, documents, diplomas and certificates
- Increase student and alumni satisfaction by meeting demands for online services
- Streamline communications and share intellectual with the knowledge the information is secure

Cost Associated with SSL Certificate Management

Managing multiple SSL Certificates can be costly and time-consuming for any organisation, but in particular for educational institutions which have many platforms to secure, spread over numerous campus locations. For traditionally vetted, high assurance SSL Certificates, institutes need to go through extensive registration and verification processes with the SSL Provider for each and every SSL Certificate purchased. Administrators must also keep track of their Certificate's differing expiration dates. On a yearly basis, administrators can spend many costly man-days just buying and renewing SSL Certificates.

Time and costs associated with managing multiple certs

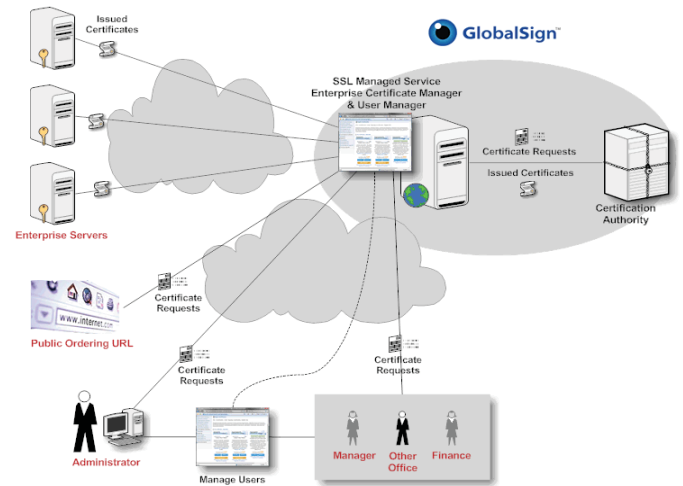
- No automatic "snapshot" or view exists that details the number of Certificates
- Certificates expire at different times, potentially exposing customers to dangerous "Certificate has expired" messages
- Institution identity documents must be submitted over and over again
- Even though numerous SSL Certificates are purchased, no automatic discounts are received
- SSL budgetary requirements become difficult to determine when each department purchases ad hoc

Why Choose GlobalSign's Fully Managed SSL Service?

SSL Managed Service from GlobalSign provides educational institutions the ability to conveniently and quickly purchase GlobalSign's Organization Validation and Extended Validation SSL Certificates through a web based management interface. It alleviates costs and optimises efficiency of SSL Certificate delivery. This scalable solution can be used by the most distributed of organisations and is the perfect solution for educational enterprises that need to manage their network infrastructure with a restricted budget.

One time vetting means once vetted, users simply log into the web based account (Software as a Service [SaaS]) model (or XML API) and issue, reissue, renew or revoke SSL Certificates on demand. A public ordering page allows administrators to share or post an internal application link, allowing anybody within the organisation to place an order for a certificate, alerting the administrator for their approval. Granular user privileges also allow administrators to create roles for users to apply, approve or report on billing and SSL Certificate activity within the account. Plus, immediate educational discounts mean savings over purchasing SSL Certificates from multiple suppliers or via premium priced retail sites.

GlobalSign's Managed SSL Service is used by numerous leading educational institutes worldwide including many UK based universities and colleges. GlobalSign has also been selected by the Trans-European Research and Education Networking Association (TERENA) to provide its leading SSL Certificates via its Managed SSL Service to EU educational institutions.



Administrative Benefits

Availability of Organization SSL and Extended Validation (EV) SSL through the same interface – for ease of ordering and certificate management both standard and the most advanced SSL Certificates can be ordered conveniently through one account.

Pre-vetting of domains allows instant issuance – educational institutes no longer have to provide the CA with institution identity details for every certificate issued. By using the GlobalSign Certificate Center, issuances can occur within minutes.

Complete certificate lifecycle management – the institution controls the application issuance, reissuance, renewal and revocation of certificates across many departments using GCC, plus has ability to customise all certificates to start and expire within the same time period.

Advanced delegated administration and approval based model – administrators have the ability to create additional users within defined roles with appropriate privileges (e.g. IT Manager for certificate management and Finance Manager for billing). Administrators and users with approval privileges can decide whether applications should be issued (with email alerts sent to approvers)

Public Ordering Page – when activated, the Public Ordering Page allows administrators to share or post an application link (e.g. on Intranets). Anybody can place an order for the Certificate via the link and the administrator is alerted to approve these new applications.

Full billing management – the organisation can view and download invoices and automatically create new downloadable "quotes" for internal authorisation.

Comprehensive reporting and auditing functions – detailed reports on spend, certificates issued, upcoming renewals can be created.

XML based API - allows full integration with the organisation's purchasing systems.

Dedicated Account Manager – provides localised comprehensive support via phone, email and web. The Account Manager can be contacted to discuss account or certificate lifecycle management issues.

Premier Support Options – if added, organisations have access to a live dedicated support technician 24 hours a day, 7 days a week, 365 days a year, with a maximum response time of 20 minutes. GlobalSign prides itself on providing the industry's highest level of customer service at all times

Financial & Technical Benefits

Certificate Discounts – GlobalSign offers educational institutions significant pricing reductions and charges no service fees, enabling institutes to save considerable budget by purchasing in bulk or Pay As You Go, compared to buying SSL Certificates separately, or from a GlobalSign competitor. Flexible options allow volume and multi-year purchases.

No infrastructure or personnel overheads - GlobalSign runs the WebTrust certified Certification Authority (CA) and web based management portal – the GlobalSign Certificate Center (GCC) – peerless in its ease of use and functionality. Administrators simply log in and manage SSL Certificates online.

Trusted Root – all SSL Certificates are issued from GlobalSign's widely distributed, strong 2048 bit Root CA Certificate.

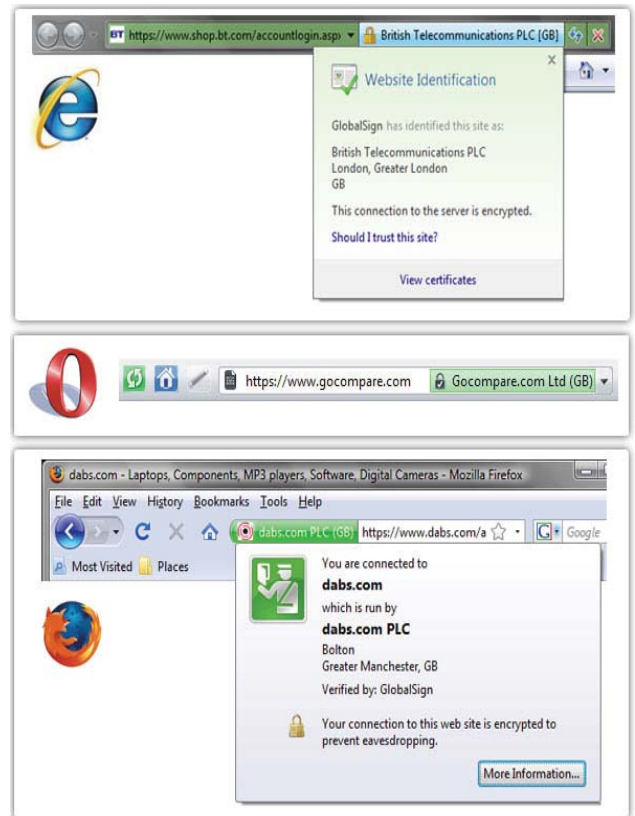
Free SGC Security - includes strong 128 bit step-up encryption to force weaker 40 bit browsers to step-up to stronger 128bit browsers or 256 bit enabling technology, improving overall SSL security. SGC from other SSL Providers features at a premium price, but is included free of charge with every GlobalSign SSL Certificate.

Wildcard SSL - provides the ability to secure multiple websites on the same domain name by enabling a variable (rather than fixed) sub domain to be used; saving time, administration and money.

Subject Alternative Names (SANs) - for total flexibility, SAN Certificates allow up to 40 domain or server names to be secured using the same single Certificate, including any combination of unified communications, fully qualified domain names, multi level sub domains, IP addresses and local host names.

Extended Validation SSL

GlobalSign's Managed SSL Service supports the issuance of Extended Validation (EV) SSL Certificates. EV SSL is the latest advancement in SSL technology, activating the green address bar in IE, Firefox and Opera. It immediately tells your customers that you're secure, trusted and an authentic company. By turning the address bar green and showing the visitor your company name and the identity of the trusted Issuing Authority, your SSL Certificate provides a higher level of trust and assurance than just the standard non-EV padlock.



LEARN MORE

Contact GlobalSign today to discuss how to can manage SSL Certificates more efficiently using GlobalSign's SSL Managed Service. For more information about our Managed SSL Service visit <http://www.globalsign.co.uk/pki/ssl-managed-service.htm> or alternatively email sales@globalsign.com

GlobalSign also provides a number of other solutions specially designed for educational enterprises, for more information visit <http://www.globalsign.co.uk/industry-solutions/education.htm>

For further information about GlobalSign's PKI services and Trusted Root, visit <http://www.globalsign.co.uk/pki/rootsign.htm>

GlobalSign Managed SSL Certificate Features

Key features of GlobalSign SSL Certificates available through the Managed SSL Service include the availability to utilise both Organization Validation (OV) and Extended Validation (EV), free inclusion of Server Gated Cryptography (SGC), (to step up weak 40 bit browser to server connections to strong 128 bit), promotional 3 for 1 server licensing, a clickable site seal, extensive warranties and recognition by all popular browsers, applications and mobile devices. GlobalSign has also pioneered an options based approach which allows customers to create tailor made SSL Certificates. Premium options such as Wildcard abilities (to allow multiple sub domains to be secured by a single certificate), Subject Alternative Names SANs (to secure any combination of unified communications, FQDN's, multi-level sub domains, IP addresses and local host names) and customised start and end dates help customers create SSL Certificates that meet their specific requirements.

For further information about GlobalSign SSL Certificate features visit: http://www.globalsign.co.uk/digital_certificate/ssl-certificate.htm

GlobalSign Ltd.

Springfield House, Sandling Road,
 Maidstone, Kent, ME14 2LP, United Kingdom
 TEL: +44 1622 766766 FAX: +44 1622 662255

<http://www.globalsign.co.uk>



A Leader in Online Security & Authentication Solutions for over 10 years