

# ePKI for iOS Identity Certificates

The easiest way to control which mobile devices can access your networks

## iOS Devices in the Enterprise

Every day the number of Enterprises and employees relying on iOS devices to conduct business is increasing, giving Enterprises and users flexibility to stay connected whether in the office or on the road. While this increased level of connectivity is beneficial for the Enterprise, opening sensitive business services to mobile device users creates serious security risks and vulnerabilities that must be addressed. GlobalSign's iOS for Identity Certificates mitigate these risks by allowing Certificate-based authentication.



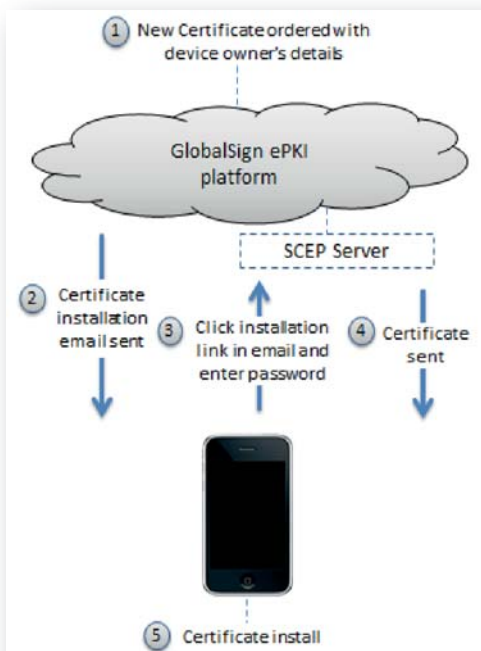
## GlobalSign's iOS Identity Certificates

GlobalSign's iOS Identity Certificates are a perfect fit for the "bring your own device" era. An easy to implement and cost-effective device authentication solution, iOS Identity Certificates allow organisations to balance employee desire to use their own iOS devices for work and the need to protect against unauthorised access to key business applications. Network Administrators can issue Certificates to approved mobile devices, allowing users to access business services without relinquishing employee control of their mobile devices.

## Benefits to the Enterprise

- Streamlined business processes and decision making with device access anytime, anywhere (24 x 7 workforce)
- Mitigated risk associated with access to core business systems via mobile devices, no need to open up networks
- An alternative to intrusive MDM solutions that relinquish employee control of their mobile devices

## Sample Deployment



## GlobalSign ePKI Platform

GlobalSign's iOS Identity Certificates are available via GlobalSign's web-based management platform known as ePKI, allowing Enterprises to manage the lifecycle of multiple digital certificates for the entire Enterprise.

Key benefits to the ePKI service include:

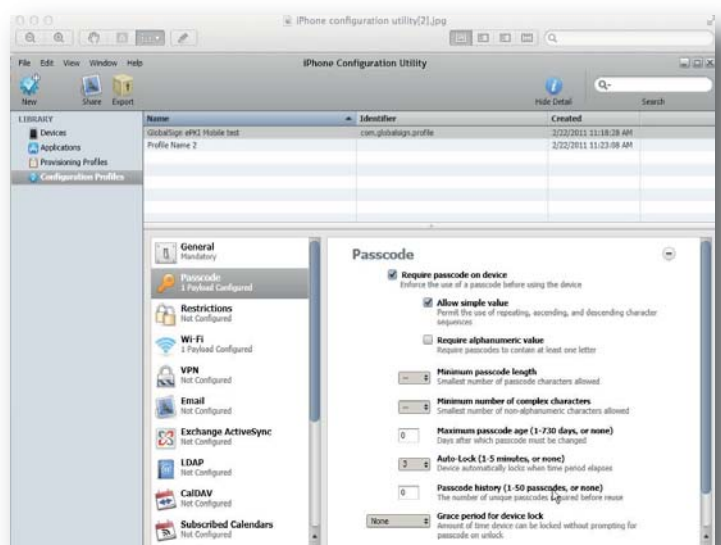
- Easy management of Certificate lifecycles (issuing, revoking, cancelling, reissuing, etc.)
- Simplified Certificate delivery with over-the-air enrollment
- Streamlined distribution of configuration profiles using the iPhone configuration utility, including passcode policies, Wi-Fi, VPNs, Exchange ActiveSync, or applications.

## Configuration Profiles

If you are planning to deploy a large number of devices, or you will have a large collection of email settings, network settings, and Certificates to install, then you may want to configure the devices by creating and distributing configuration profiles. Configuration profiles quickly load settings and authorisation information onto a device.

GlobalSign's ePKI platform allows for streamlined distribution of configuration profiles using the iPhone configuration utility, including passcode policies, Wi-Fi, VPNs, Exchange ActiveSync, or applications. Profile settings are set in the configuration utility and can be imported into the ePKI platform for distribution to multiple devices.

Below is an example of a configuration profile setup and associated with an ePKI Certificate Profile.



For more information about GlobalSign solutions, please call UK +44 1622 766766 or Europe +32 16 891900

Alternatively please visit:  
[www.globalsign.co.uk/ios-authentication/](http://www.globalsign.co.uk/ios-authentication/)  
[www.globalsign.eu/ios-authentication/](http://www.globalsign.eu/ios-authentication/)